

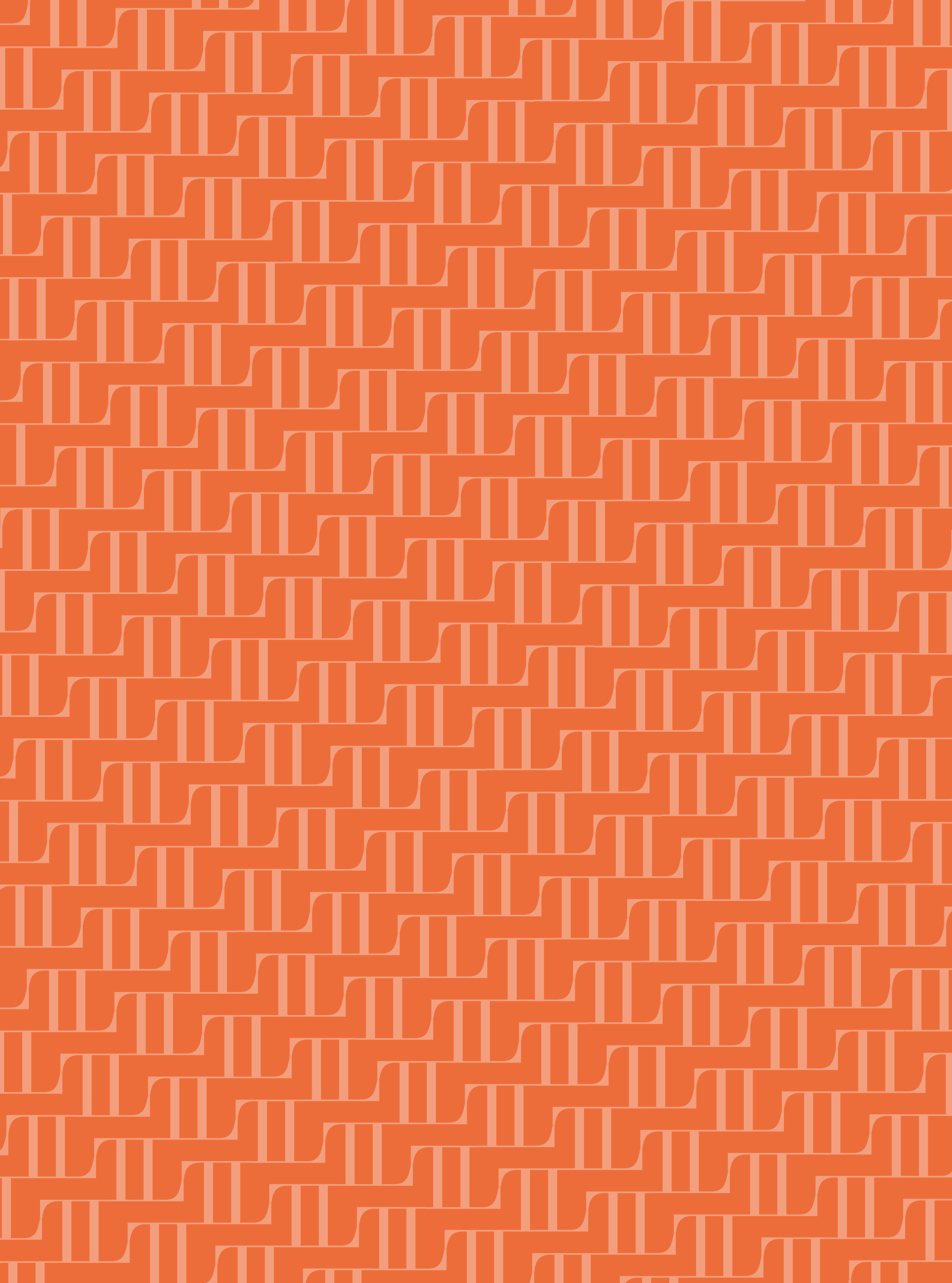
TL  
THE  
LUCAN

CHELSEA, LONDON

---

AUTOGRAPH COLLECTION®  
RESIDENCES

FLOORPLANS



TL  
THE  
LUCAN

CHELSEA, LONDON

---

AUTOGRAPH COLLECTION®  
RESIDENCES

# INTERIORS SPECIFICATION

## KITCHEN

- Bespoke-designed, fitted kitchens incorporating concealed handle, soft-closing doors and drawers throughout
- High quality cupboard doors – bianco matt lacquer (low level) and gold metal effect lacquer (high level)
- Concealed refuse and recycling storage
- Stone worktops with tinted mirror splashbacks

## APPLIANCES

- Miele Single oven
- Miele Combination oven microwave and grill
- Miele Flush Fitting Induction Hob – 4 zones
- Miele Cooker Hood
- Miele Drinks Fridge
- Miele Warming Drawers
- Integrated Fridge Freezer
- Fully-integrated Dishwasher
- Fully-integrated Washer Dryer
- Under mounted sink with deck mounted ‘instant hot & filter’ water tap

## BATHROOMS AND EN-SUITES

- Porcelain/stone on walls and floor
- Porcelain, top mounted hand basins with mixer tap (twin basins in Master En-suites)
- Mosaic stone on floors in Master En-suite
- Concealed feature lighting
- Heated towel rails
- Frameless, glass shower screens
- Floor level ‘wet room’ showers in Master En-suites
- Wall-mounted toilet roll holder and robe hooks in bronze
- Wall-mounted dual flush WCs with soft-close seat covers and concealed cistern (Geberit Aquaclean WCs in Master En-suites)
- Philip Stark designed WCs in master and guest bathrooms with SensoWash
- Wall hung WC in Powder Room with WC SensoWash Starck Plus
- Ceiling-mounted ‘rain head’ showers and separate hand showers in shower areas
- Underfloor heating

## INTERIOR FINISHES: APARTMENTS

- Walls and ceilings to be finished in white matt paint (where other finishes are not applied)
- Bespoke fitted full height wardrobes in all bedrooms, (fitted internally with rails, shelves and drawers)
- Multi-point locking full height front door with spyhole
- Antique brass and leather finish door lever throughout
- Natural oak timber flooring in hall, living room, kitchen and all bedrooms
- Feature panels on walls
- Feature on ceiling

## COMMON AREAS (ENTRANCE LOBBY)

- Feature entrance lobby with bespoke concierge desk
- Polished stone tiling on floor with feature stone border
- Fabric feature panels with stone skirting

## COMMON AREAS (COMMON CORRIDORS ON 1<sup>ST</sup> TO 7<sup>TH</sup> FLOOR)

- Stone in residential corridors and lift lobbies
- Timber architraves for doors
- Polished plaster with feature resin panel and metal architrave

## OTHER FEATURES: APARTMENTS

- Openable windows
- Minimum ceiling height 2.5m principal rooms with feature coffered ceiling of over 2.7m

## COMMON PARTS

- Secure bicycle storage available for all apartments
- Lift access to all floors with bespoke finishes consisting of leather, stone and mirror

## ELECTRICAL

- Video/audio door entry system
- Mood lighting in principal living areas
- Metal faced, slim line switches and sockets
- Energy efficient lighting throughout
- Feature lighting in select locations throughout

## TELECOMMUNICATIONS

- Wiring for TV, Sky and data connection in living room and bedrooms

## HEATING AND COOLING

- Thermostatically controlled comfort heating and cooling in all living rooms and bedrooms
- Electric underfloor heating in bathrooms

## PRIVACY AND PEACE OF MIND

- Access to apartments via full colour video door entry and electronic access to common areas
- Key fob security entry into the building
- CCTV in ground floor entrances and common areas
- Mains supply heat/smoke detectors to all apartments
- Smoke detection to common areas

## ADAPTABILITY

- Some apartments are wheelchair-adaptable; please ask for details



Time at The Lucan isn't just about living from day to day.

It's about true belonging, connection, and community. Making the world your world – and ensuring your home reflects your style and identity.

Overseeing each bespoke residence, The Luminary is a daring new type of concierge which combines the ultimate in prestige hospitality and Marriott Bonvoy benefits with an intuitive – and unrivalled – sense of service.

Whether you want to work, play, relax or retreat, The Luminary ensures you have an incomparable

mixture of everyday, on-demand and exclusive services and amenities at your fingertips. From housekeeping, travel, groceries and wellbeing, to in-house tailoring, private dining and sourcing the finest epicurean experiences London has to offer: The Luminary is by your side.

An Autograph Collection residence, exactly like nothing else. With a level of hospitality and service – exactly like nowhere else.



Personal Shopping



Wellness



Elite Marriott Bonvoy Status

AMENITIES & SERVICES

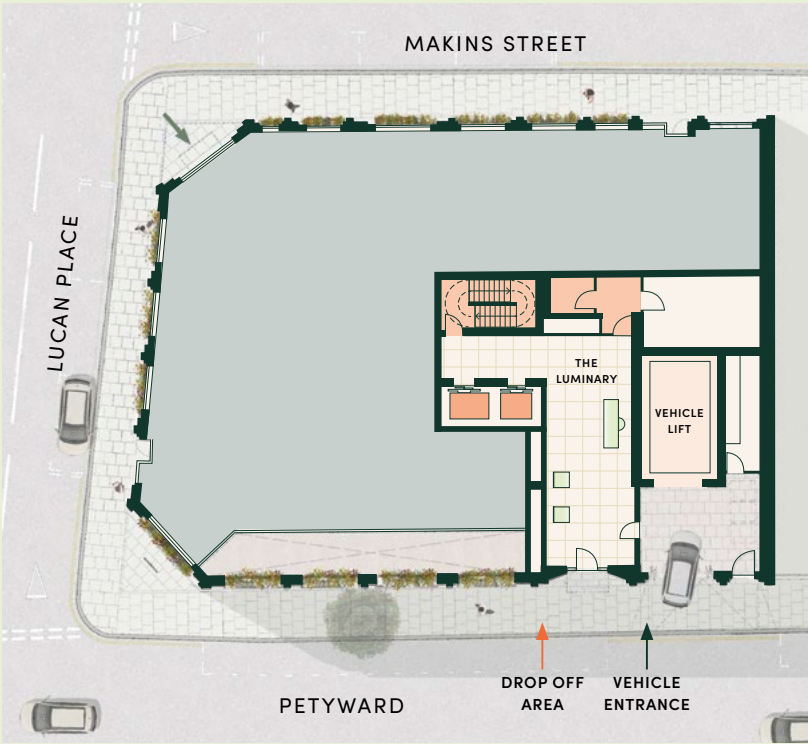
# The art of living, without limits



Top London Chefs



Personal Chauffeur



24/7 Valet Parking

ELITE MARRIOTT BONVOY STATUS

Exclusive Elite Marriott Bonvoy Benefits

EVERYDAY

- 24/7 Concierge
- 24/7 Valet Parking
- Residential Operations Manager
- Housekeeping (Common Areas)
- Gym

ON DEMAND

- Arrival Preparation
- Personal Chauffeur
- Butlers & House Maids
- Housekeeping (Residences)
- Wellness
- Personal Trainers
- Gift Arrangement
- Travel Arrangements
- Grocery Shopping Service
- Dog Walking / Pet Care
- Plant Care
- Florist Services

EXCLUSIVE EXPERIENCES

- Private Dining
- Parties & Events
- Top London Chefs
- Top London Tailoring
- Personal Shopping Service

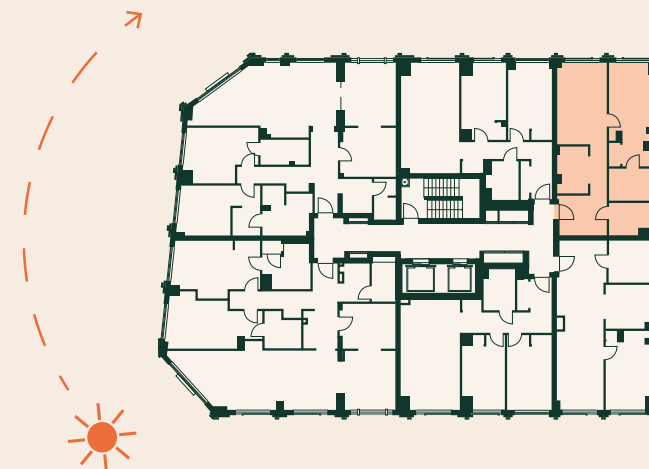
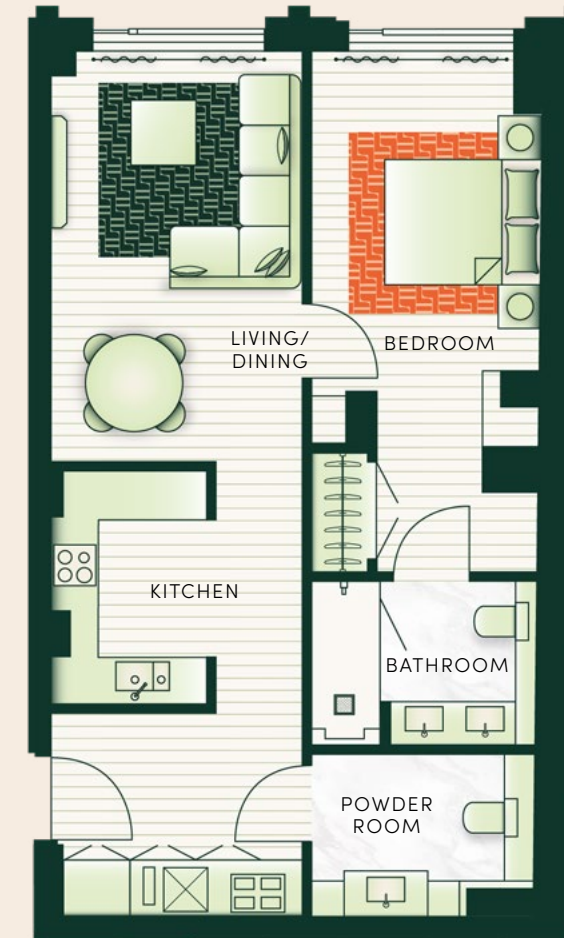
# FLOOR PLANS



## FLOORPLANS

### 1 BEDROOM - TYPE 1

UNIT NOs. 103

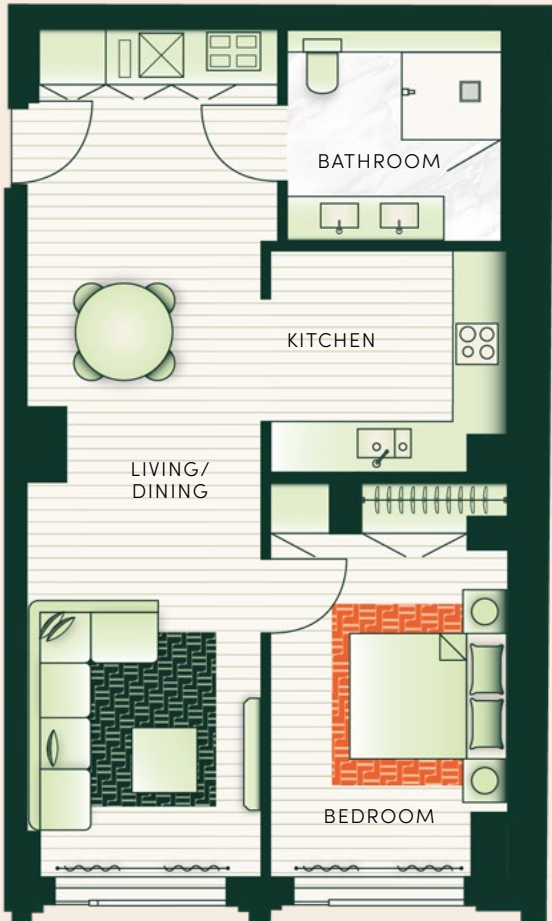


LIVING/DINING	3.30M x 5.50M
KITCHEN	3.10M x 2.00M
BEDROOM	3.30M x 3.30M
BATHROOM	3.30M x 2.00M
POWDER ROOM	2.60M x 2.00M
<b>TOTAL AREA</b>	<b>74 SQ. M.</b>

Any areas, measurements or distances are approximate. These particulars are prepared for preliminary plans and specifications before the completion of the properties and are only intended as a guide. They may have been changed during construction and final finishes could vary.

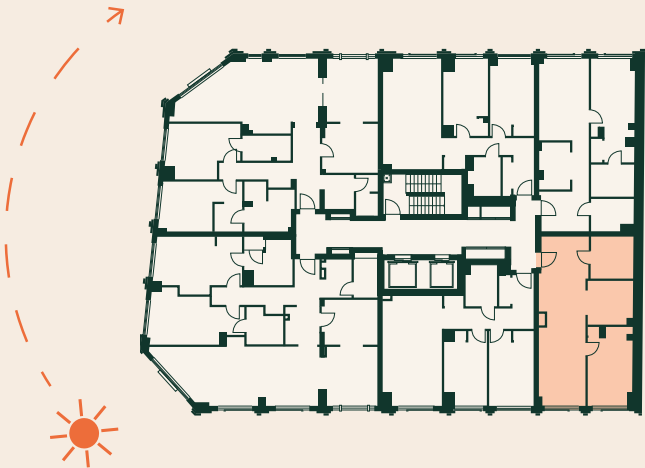
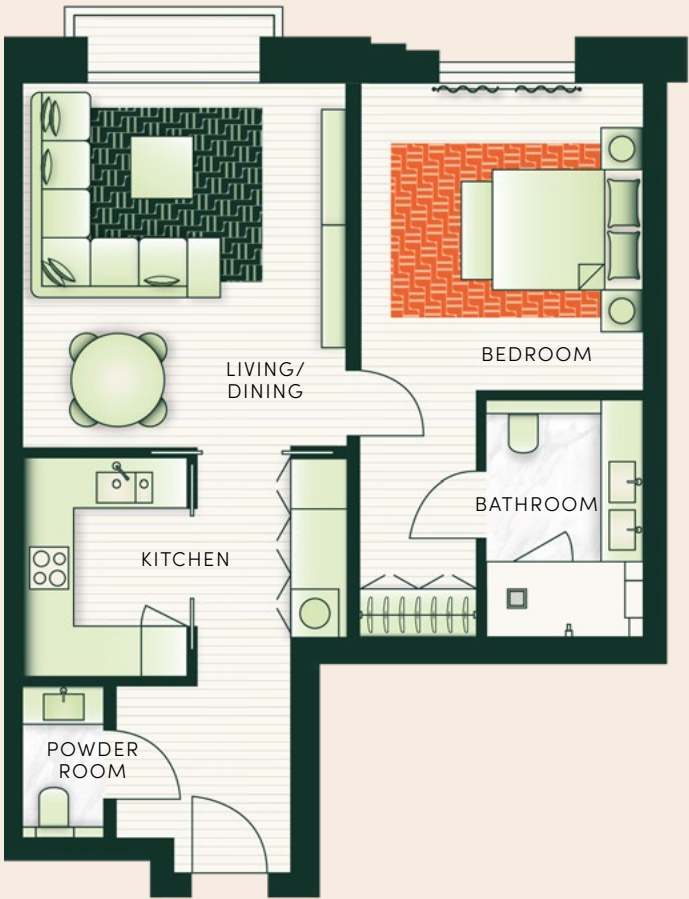
1 BEDROOM - TYPE 2

UNIT NOS. 104

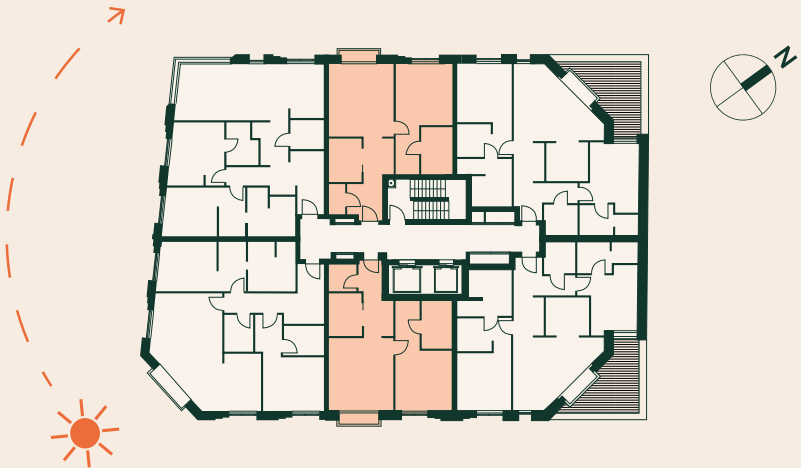


1 BEDROOM - TYPE 3

UNIT NOS. 202, 205, 302, 305, 402 & 405



LIVING/DINING	3.30M x 5.50M
KITCHEN	2.80M x 3.30M
BEDROOM	3.30M x 4.64M
BATHROOM	2.50M x 3.00M
TOTAL AREA	70 SQ. M.

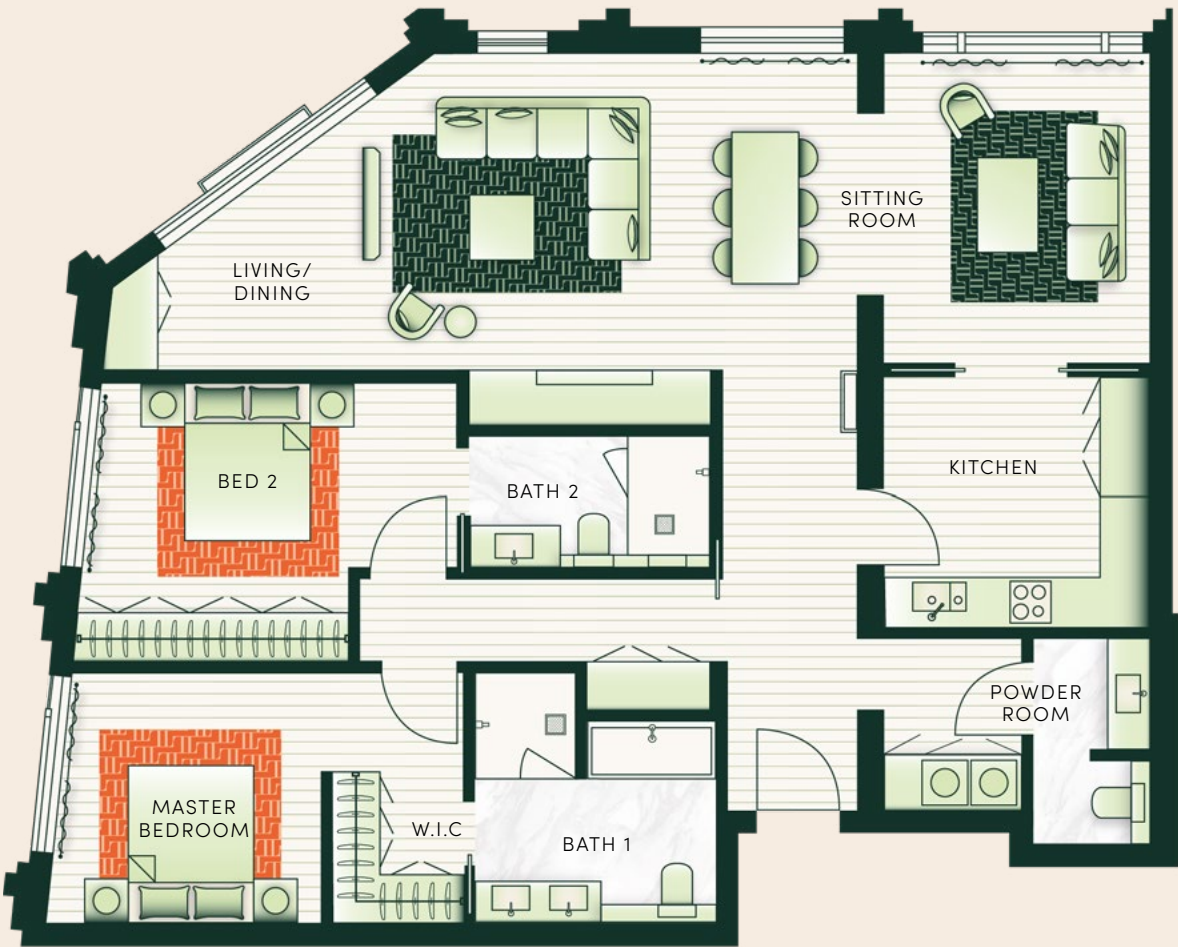


LIVING/DINING	4.30M x 4.80M
KITCHEN	2.10M x 2.80M
BEDROOM	3.70M x 4.00M
BATHROOM	2.00M x 3.00M
POWDER ROOM	1.00M x 2.00M
TOTAL AREA	74 SQ. M.



2 BEDROOM - TYPE 1

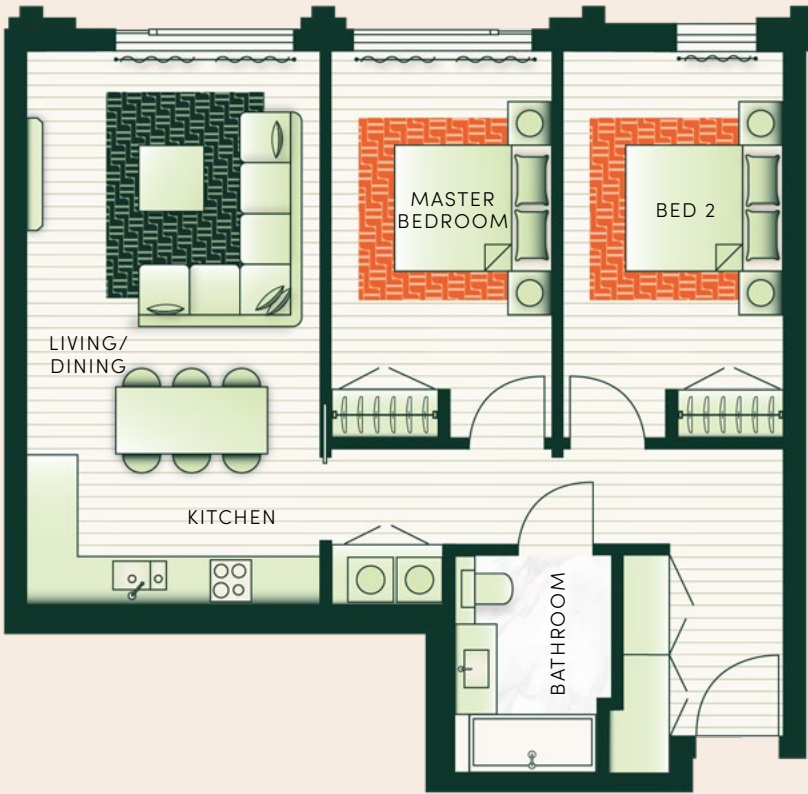
UNIT NOs. 101



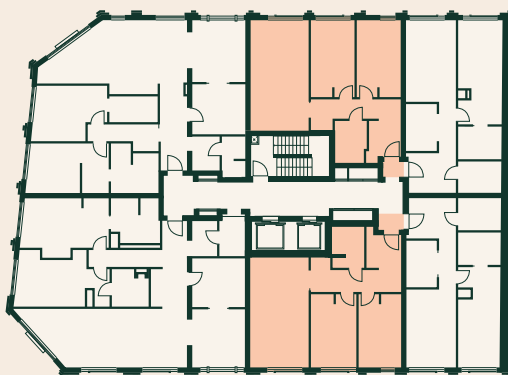
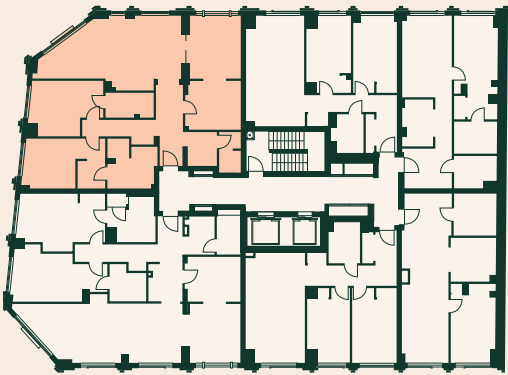
LIVING/DINING	13.00M x 4.20M
SITTING AREA	3.50M x 4.10M
KITCHEN	3.50M x 3.30M
MASTER BEDROOM	3.25M x 3.30M
BEDROOM 2	4.50M x 3.00M
BATHROOM 1	3.15M x 2.65M
BATHROOM 2	3.20M x 1.70M
POWDER ROOM	1.50M x 2.70M
TOTAL AREA	147 SQ. M.

2 BEDROOM - TYPE 2

UNIT NOs. 102, 105

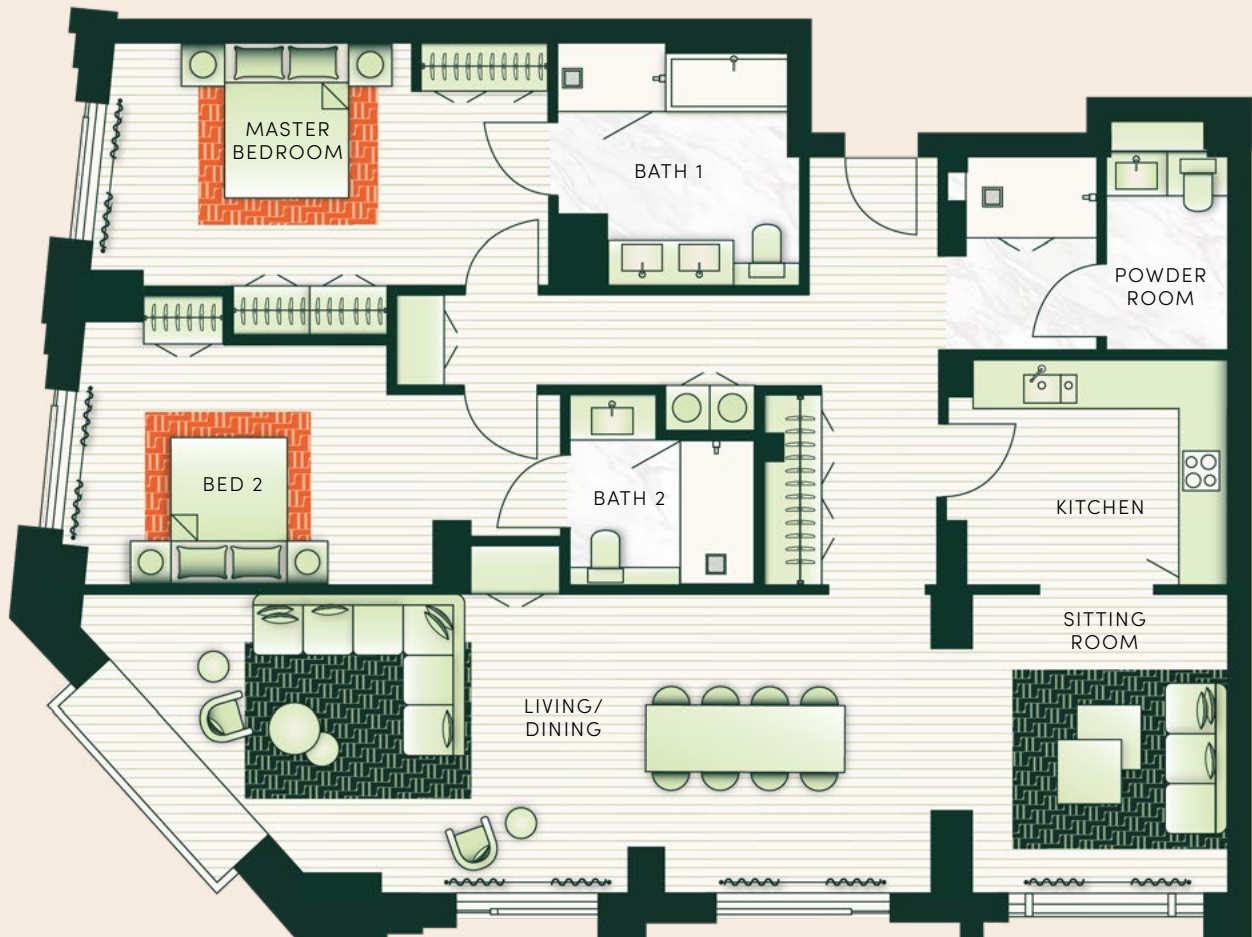


LIVING/DINING	3.80M x 5.30M
KITCHEN	3.80M x 2.00M
MASTER BEDROOM	2.90M x 5.10M
BEDROOM 2	2.90M x 5.10M
BATHROOM	2.10M x 2.80M
TOTAL AREA	82 SQ. M.



2 BEDROOM - TYPE 3

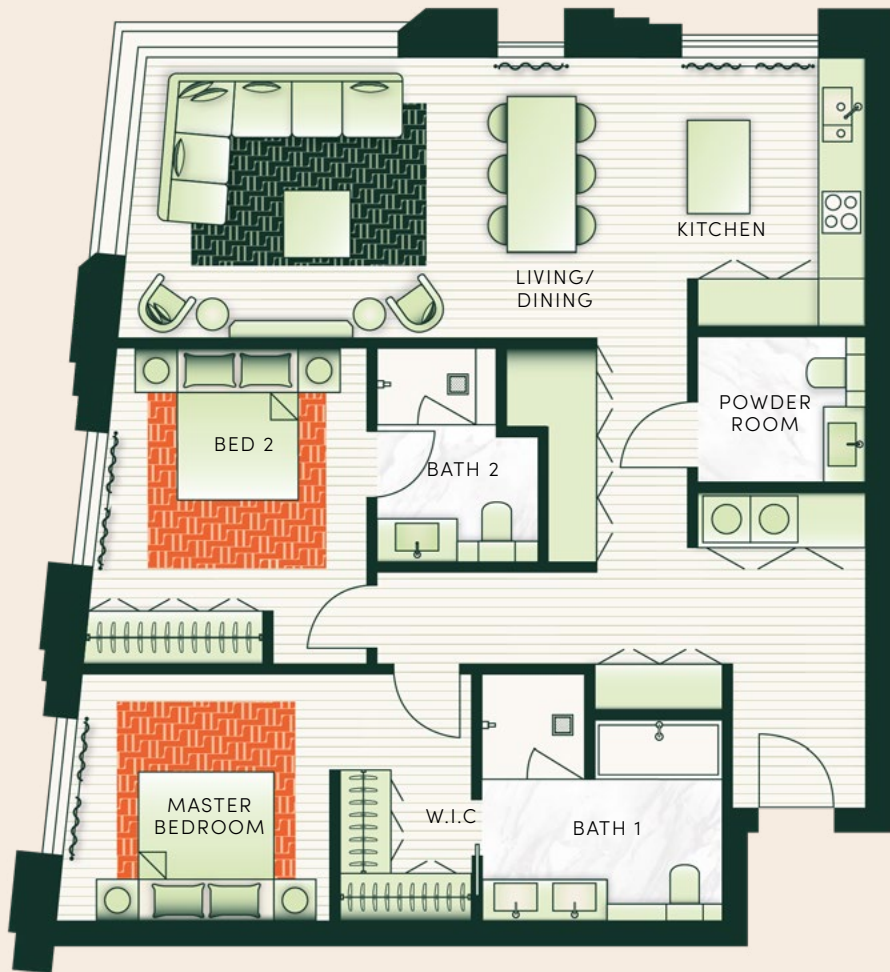
UNIT NOs. 106



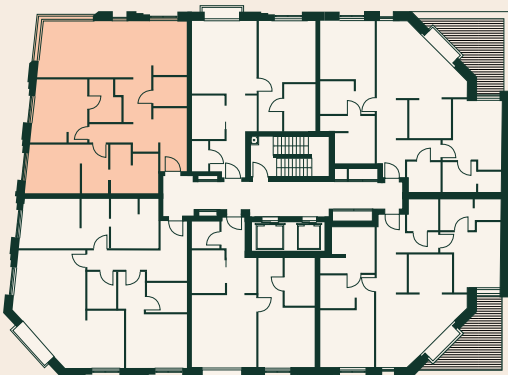
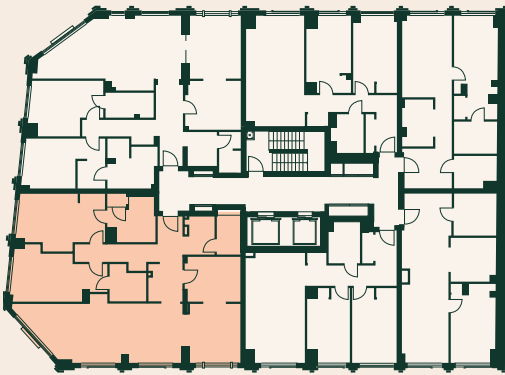
LIVING/DINING	9.50M x 4.30M
SITTING AREA	4.00M x 3.40M
KITCHEN	3.60M x 3.00M
MASTER BEDROOM	5.50M x 3.30M
BEDROOM 2	6.20M x 3.30M
BATHROOM 1	3.20M x 3.20M
BATHROOM 2	2.50M x 2.40M
POWDER ROOM	2.00M x 2.80M
TOTAL AREA	156 SQ. M.

2 BEDROOM - TYPE 4

UNIT NOs. 201, 301 & 401



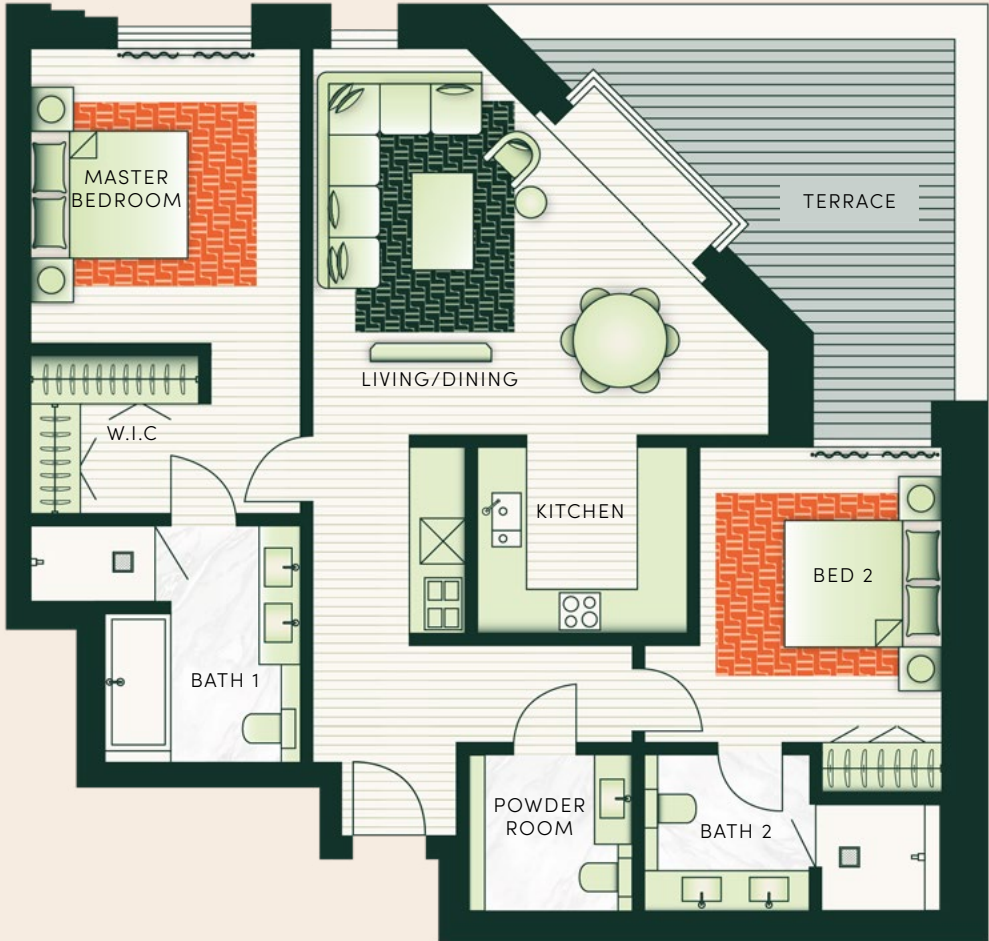
LIVING/DINING	7.10M x 3.70M
KITCHEN	2.30M x 2.90M
MASTER BEDROOM	3.20M x 3.30M
BEDROOM 2	3.30M x 4.10M
BATHROOM 1	3.10M x 2.60M
BATHROOM 2	2.10M x 2.70M
POWDER ROOM	2.20M x 1.80M
TOTAL AREA	115 SQ. M.





2 BEDROOM - TYPE 5

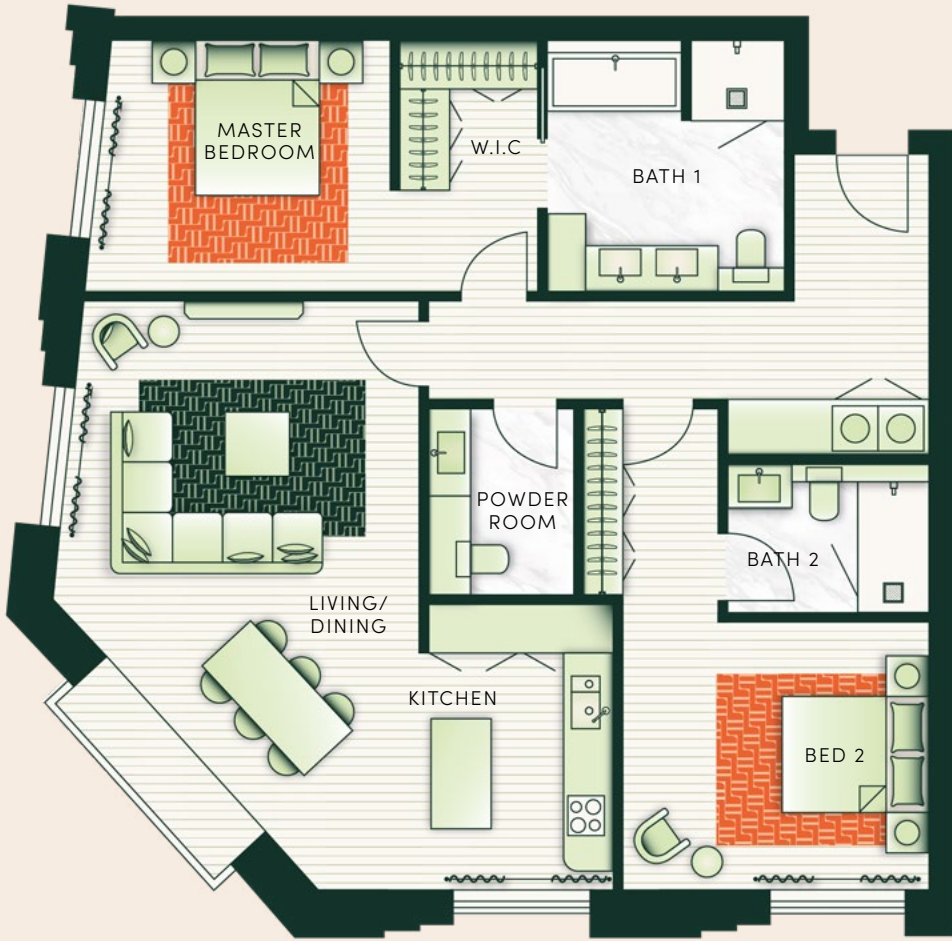
UNIT NOS. 203 & 204



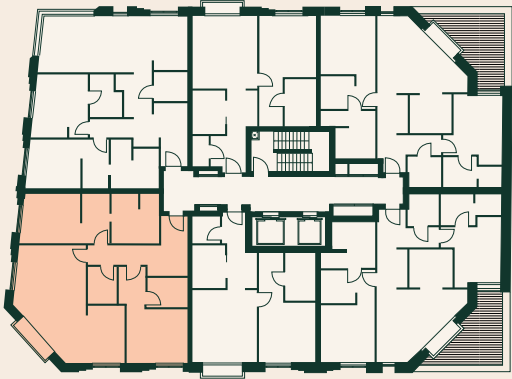
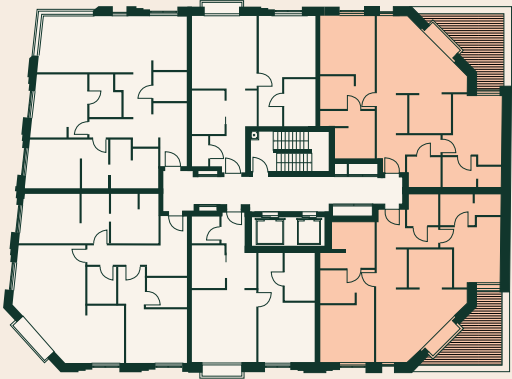
LIVING/DINING	6.00M x 5.10M
KITCHEN	2.70M x 2.50M
MASTER BEDROOM	3.60M x 3.90M
BEDROOM 2	3.20M x 3.90M
BATHROOM 1	2.60M x 3.10M
BATHROOM 2	3.80M x 2.00M
POWDER ROOM	2.20M x 2.00M
<b>TERRACE AREA</b>	<b>14 SQ. M.</b>
<b>TOTAL AREA</b>	<b>124 SQ. M.</b>

2 BEDROOM - TYPE 6

UNIT NOS. 206, 306 & 406

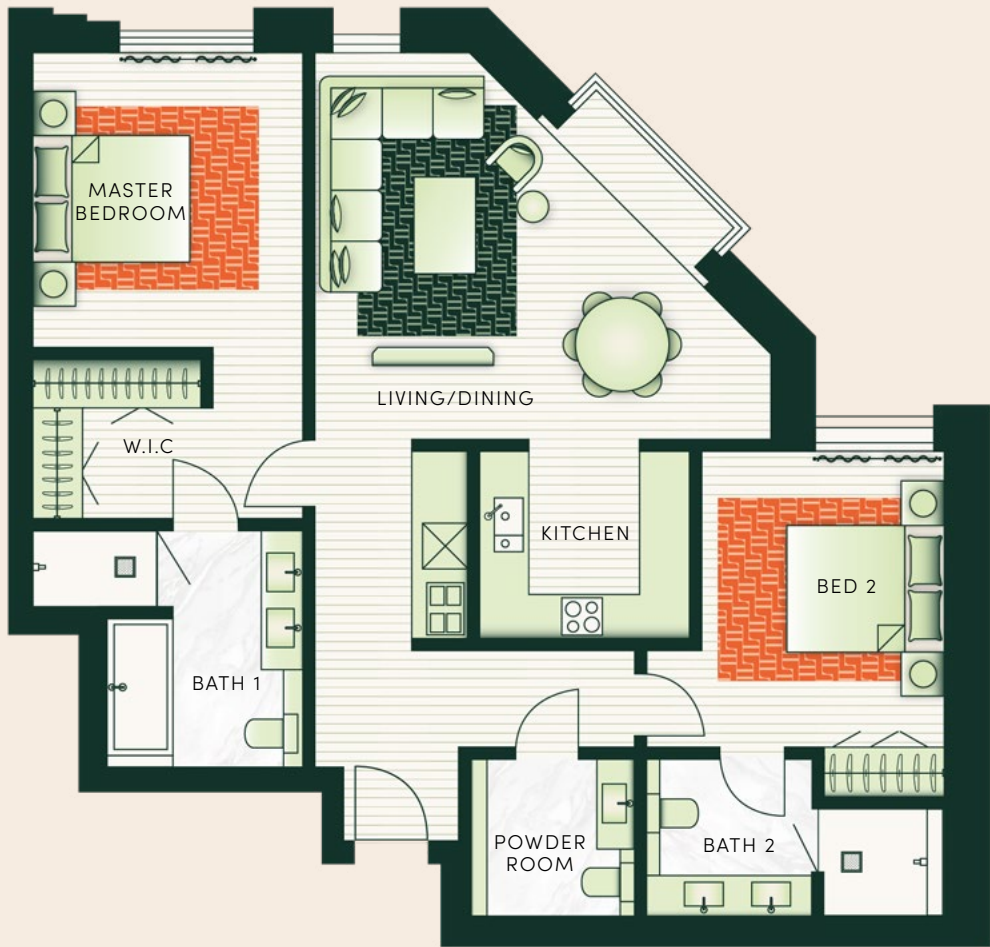


LIVING/DINING	4.30M x 7.70M
KITCHEN	2.50M x 3.10M
MASTER BEDROOM	3.60M x 3.30M
BEDROOM 2	4.00M x 3.50M
BATHROOM 1	3.10M x 3.30M
BATHROOM 2	2.60M x 1.90M
POWDER ROOM	1.80M x 2.40M
<b>TOTAL AREA</b>	<b>121 SQ. M.</b>



2 BEDROOM - TYPE 7

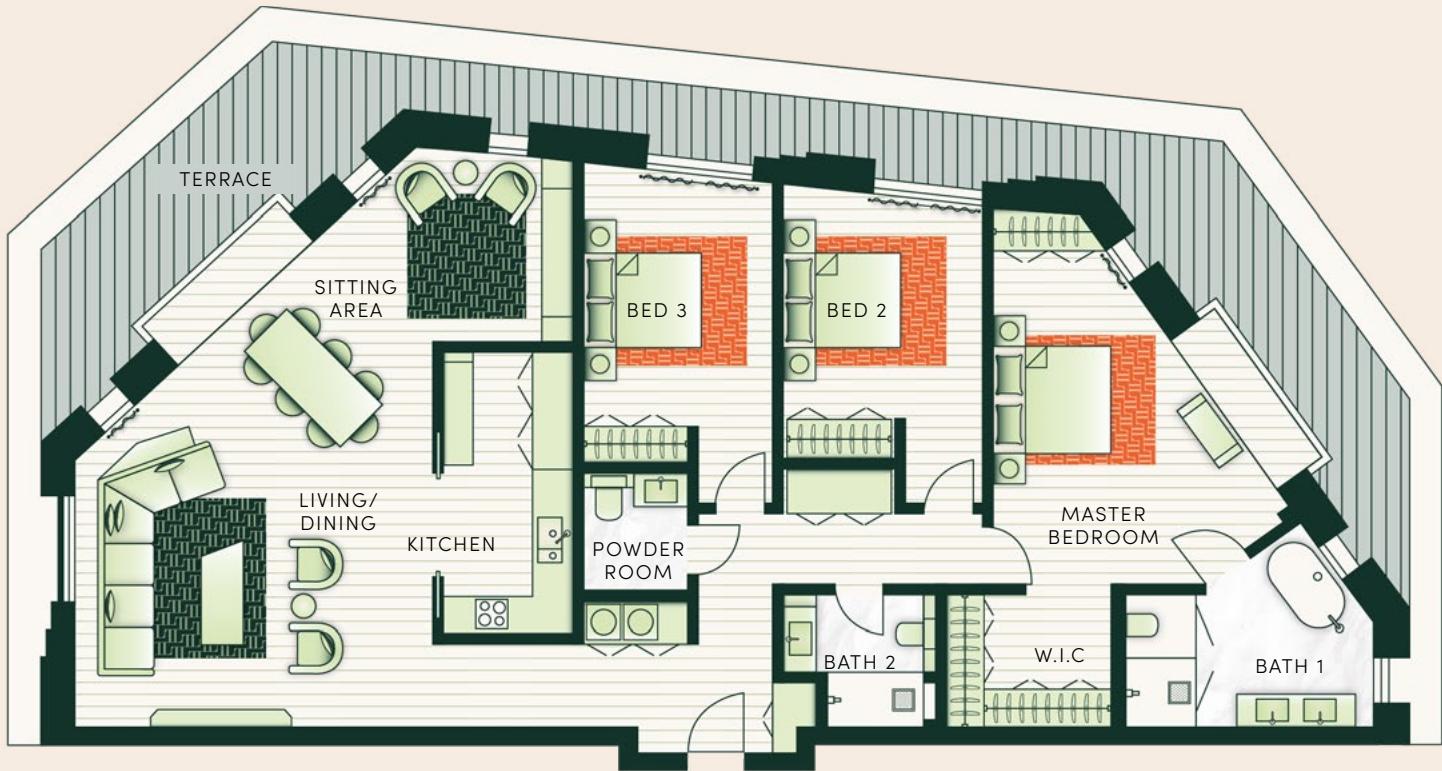
UNIT NOS. 303, 304, 403 & 404



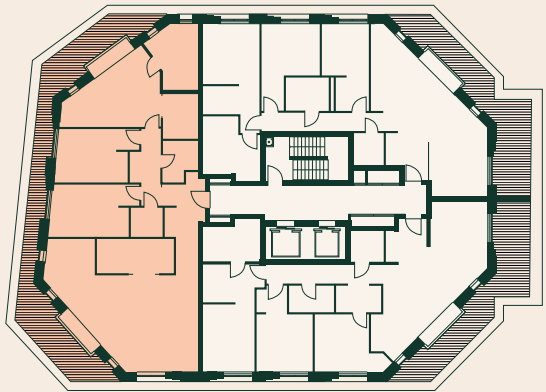
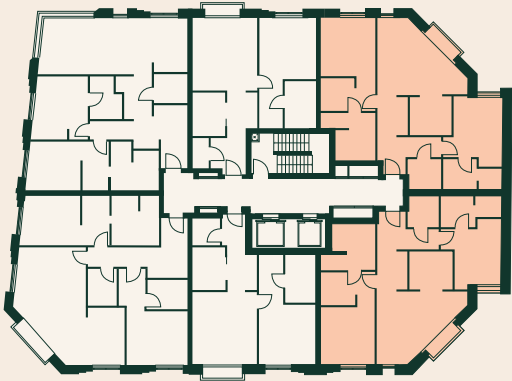
LIVING/DINING	6.00M x 5.10M
KITCHEN	2.70M x 2.50M
MASTER BEDROOM	3.60M x 3.90M
BEDROOM 2	3.20M x 3.90M
BATHROOM 1	2.60M x 3.10M
BATHROOM 2	3.80M x 2.00M
POWDER ROOM	2.20M x 2.00M
TOTAL AREA	109 SQ. M.

3 BEDROOM - TYPE 1

UNIT 501



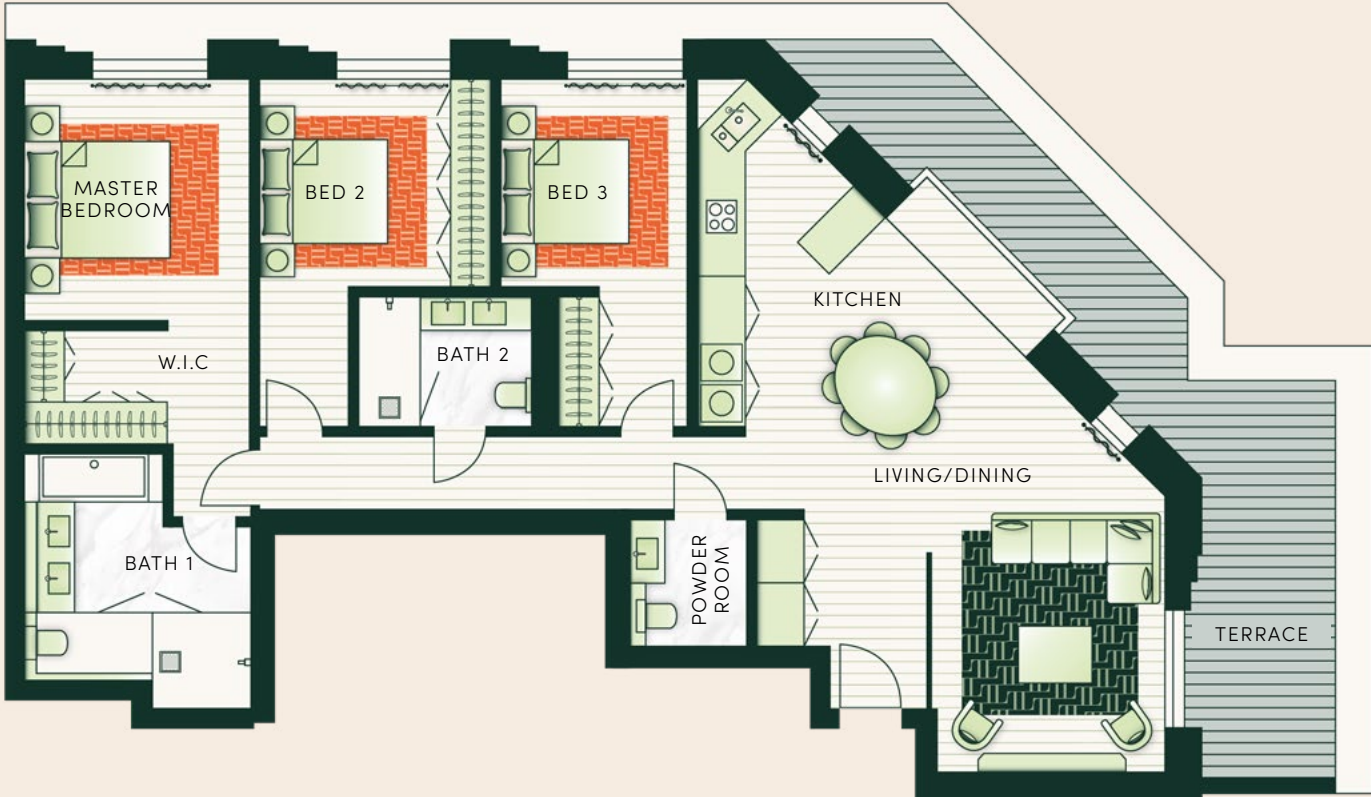
LIVING/DINING	8.30M x 6.00M
KITCHEN	4.70M x 2.10M
SITTING AREA	3.00M x 2.30M
MASTER BEDROOM	6.00M x 4.00M
BEDROOM 2	3.60M x 3.30M
BEDROOM 3	4.00M x 3.20M
BATHROOM 1	2.20M x 4.10M
BATHROOM 2	2.80M x 3.10M
POWDER ROOM	1.90M x 1.80M
TERRACE AREA	48 SQ. M.
TOTAL AREA	226 SQ. M.





3 BEDROOM - TYPE 2

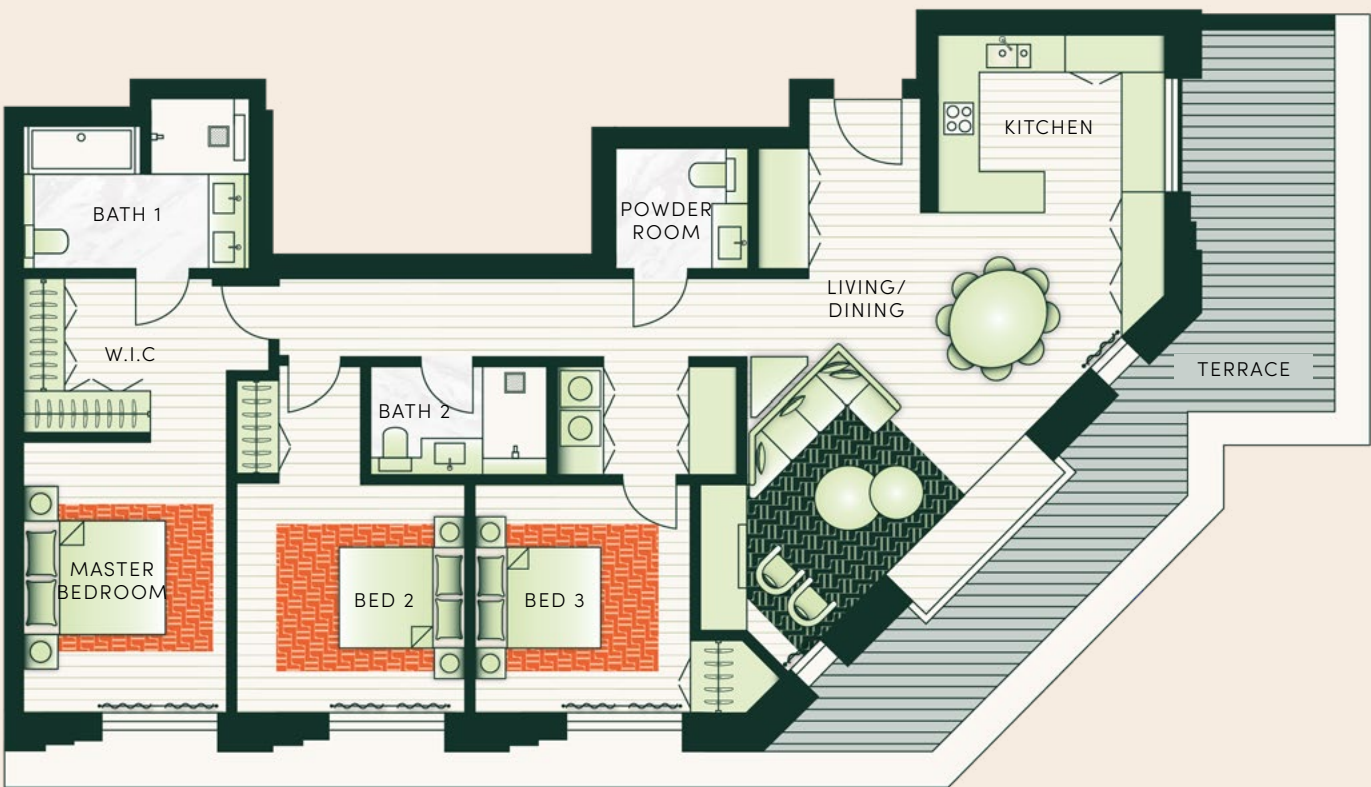
UNIT 502



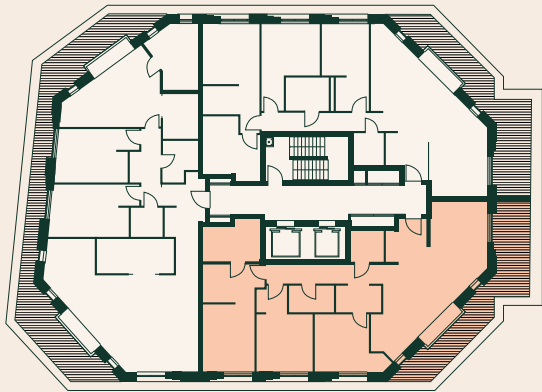
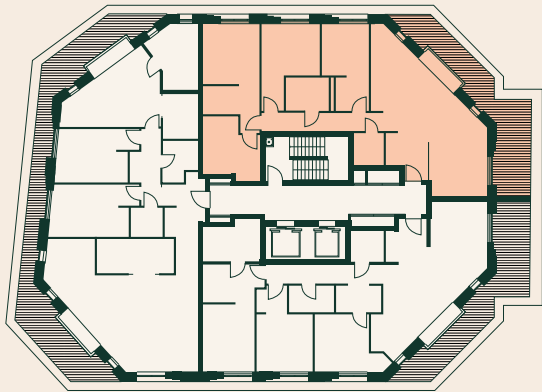
LIVING	3.60M x 4.00M
DINING	4.00M x 4.50M
KITCHEN	3.00M x 2.40M
MASTER BEDROOM	4.00M x 3.50M
BEDROOM 2	3.60M x 3.20M
BEDROOM 3	2.90M x 3.20M
BATHROOM 1	3.50M x 3.50M
BATHROOM 2	2.60M x 2.00M
POWDER ROOM	1.80M x 1.90M
<b>TERRACE AREA</b>	<b>26 SQ. M.</b>
<b>TOTAL AREA</b>	<b>166 SQ. M.</b>

3 BEDROOM - TYPE 3

UNIT 503



LIVING/DINING	6.70M x 4.00M
KITCHEN	3.50M x 2.70M
MASTER BEDROOM	3.20M x 4.20M
BEDROOM 2	3.50M x 3.60M
BEDROOM 3	3.30M x 3.60M
BATHROOM 1	3.40M x 2.20M
BATHROOM 2	2.70M x 1.60M
POWDER ROOM	2.00M x 1.90M
<b>TERRACE</b>	<b>26 SQ. M.</b>
<b>TOTAL AREA</b>	<b>164 SQ. M.</b>



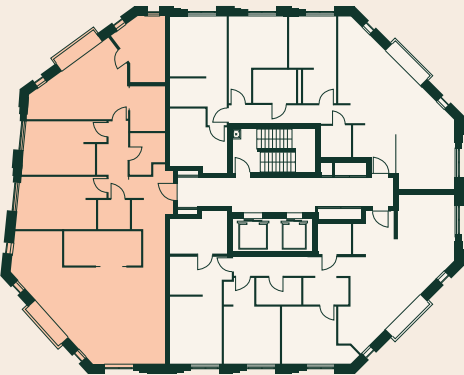


3 BEDROOM - TYPE 4

UNIT 601



LIVING/DINING	8.30M x 6.00M
KITCHEN	4.70M x 2.10M
SITTING AREA	3.00M x 2.30M
MASTER BEDROOM	6.00M x 4.00M
BEDROOM 2	3.60M x 3.30M
BEDROOM 3	4.00M x 3.20M
BATHROOM 1	2.20M x 4.10M
BATHROOM 2	2.80M x 3.10M
POWDER ROOM	1.90M x 1.80M
TOTAL AREA	178 SQ. M.

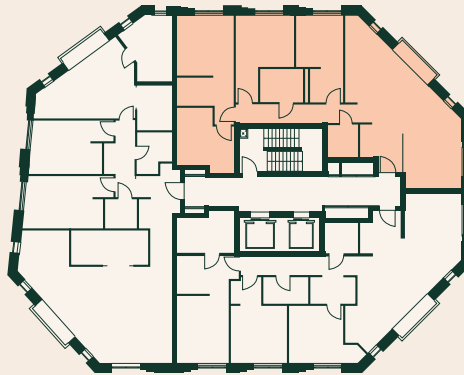


3 BEDROOM - TYPE 5

UNIT 602

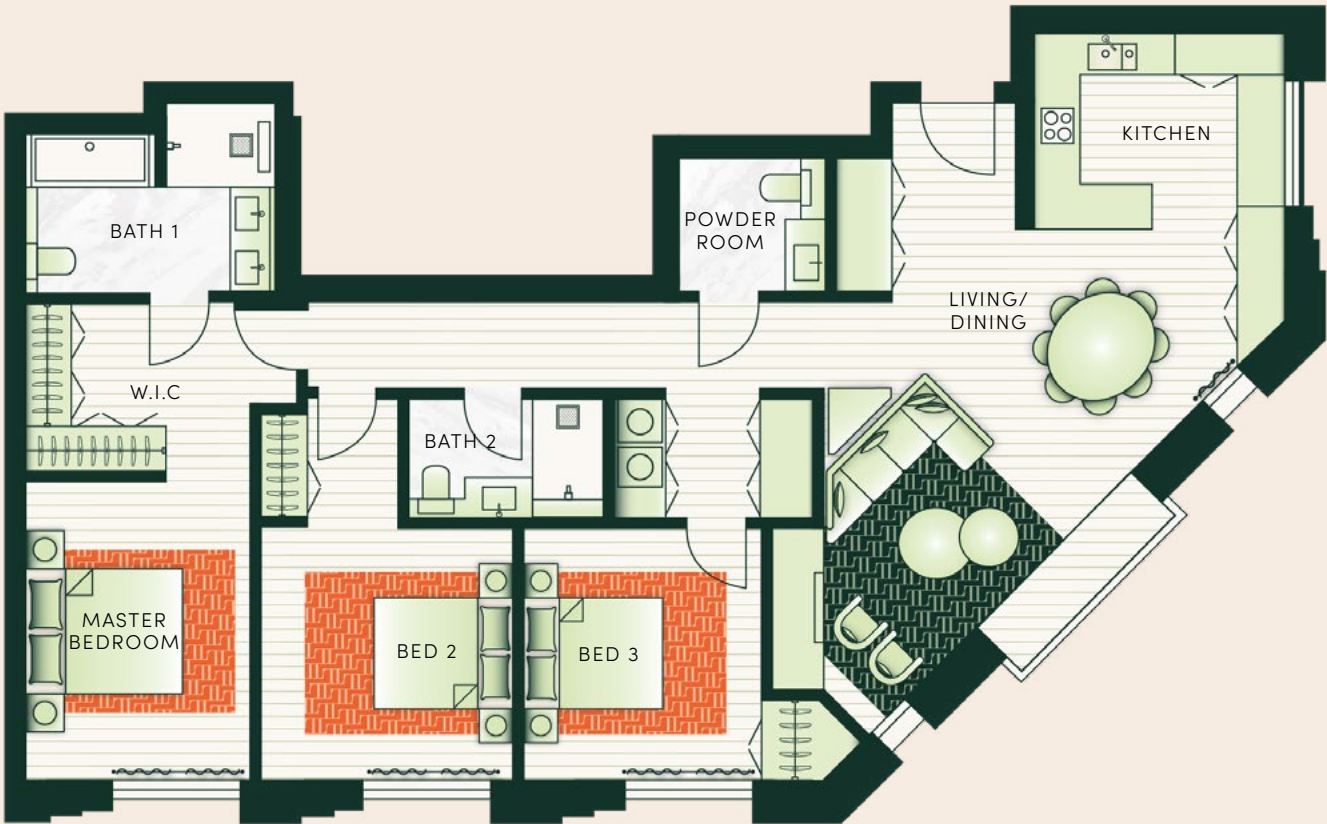


LIVING	3.60M x 4.00M
DINING	4.00M x 4.50M
KITCHEN	3.00M x 2.40M
MASTER BEDROOM	4.00M x 3.50M
BEDROOM 2	3.60M x 3.20M
BEDROOM 3	2.90M x 3.20M
BATHROOM 1	3.50M x 3.50M
BATHROOM 2	2.60M x 2.00M
POWDER ROOM	1.80M x 1.90M
TOTAL AREA	140 SQ. M.



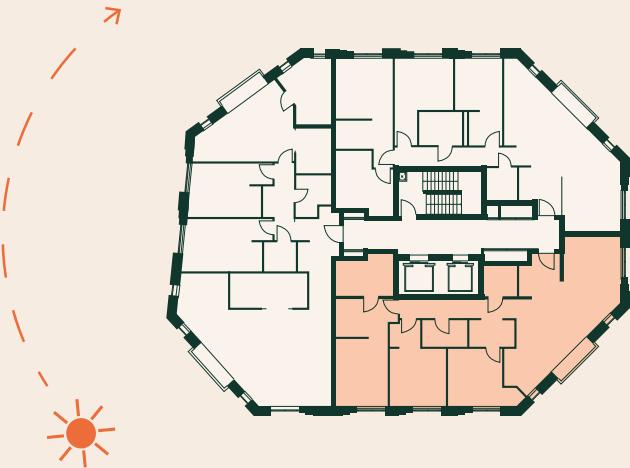
3 BEDROOM - TYPE 6

UNIT 603



PENTHOUSE

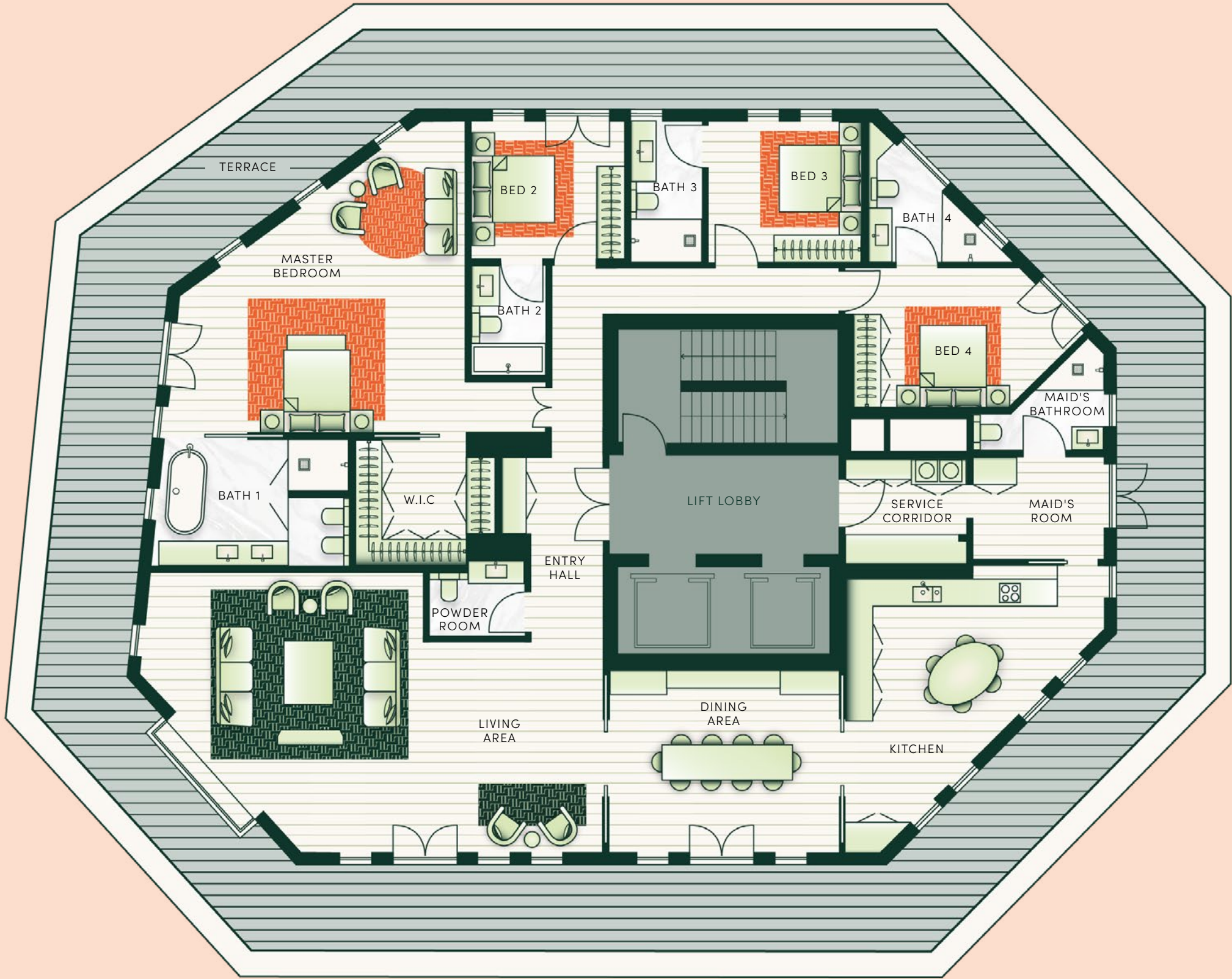
LIVING/DINING	6.70M x 4.00M
KITCHEN	3.50M x 2.70M
MASTER BEDROOM	3.20M x 4.20M
BEDROOM 2	3.50M x 3.60M
BEDROOM 3	3.30M x 3.60M
BATHROOM 1	3.40M x 2.20M
BATHROOM 2	2.70M x 1.60M
POWDER ROOM	2.00M x 1.90M
TOTAL AREA	139 SQ. M.





PENTHOUSE

UNIT 701



LIVING AREA	10.60M x 6.70M
DINING ROOM	5.40M x 4.30M
KITCHEN	6.40M x 6.10M
MASTER BEDROOM	6.70M x 7.30M
BEDROOM 2	3.60M x 3.20M
BEDROOM 3	3.60M x 3.30M
BEDROOM 4	3.20M x 4.20M
BATHROOM 1	4.30M x 2.90M
BATHROOM 2	1.70M x 2.60M
BATHROOM 3	1.70M x 3.30M
BATHROOM 4	5.50M SQ. M
POWDER ROOM	2.20M x 1.50M
MAID'S ROOM	3.10M x 2.40M
<b>TERRACE AREA</b>	<b>170 SQ. M</b>
<b>TOTAL AREA</b>	<b>470 SQ. M</b>